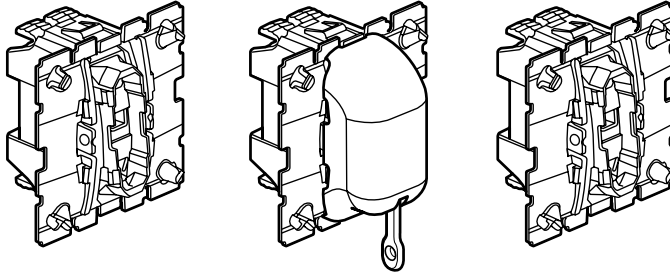


Céliane™ 6A push-buttons

Cat No(s): 670 31/34/38

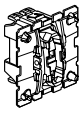
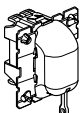
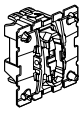


CONTENTS	Page
1. Use	1
2. Range	1
3. Products with indicator light	1-2
4. Installation	2
5. Overall dimensions	2
6. Connection	3
7. Operation	3
8. General characteristics	3
9. Cleaning	3
10. Accessories	3

1. USE

Lighting control mechanisms in general, able to house (or not) locator/indicator devices (indicator lights).

2. RANGE

Designation	Cat. No.	Nbr of gangs	Connection method	Weight (g)	Characteristics
Changeover push-button 	670 31	1	Auto	17	6 A - 250 VAC
Pull cord changeover push-button 	670 38	1	Auto	20	6 A - 250 VAC
NO contact push-button 	670 34	1	Auto	17	6 A - 250 VAC

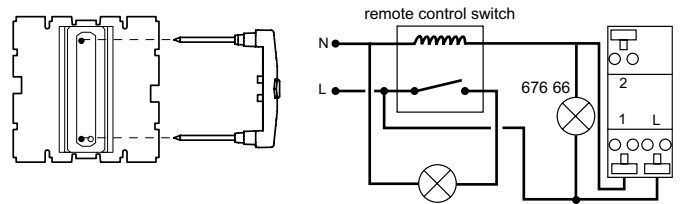
3. PRODUCTS WITH INDICATOR LIGHT

3.1 Illumination function (locating a control)

Cat. No. 670 31

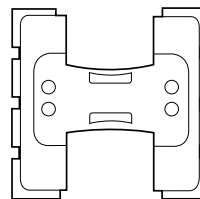
Use a specific cover plate.

Cat. No. 676 66 (230 VAC, 0.15 mA)
or Cat. No. 676 67 (12/24/48 VDC or VAC)
12 V~ : 0.2 mA 12 V~ : 0.4 mA
24 V~ : 0.9 mA 24 V~ : 1.2 mA
48 V~ : 2.7 mA 48 V~ : 3.7 mA



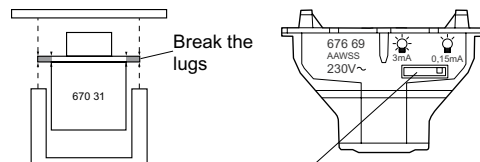
• Independent indicator light

Cat. No. 676 69 (230 VAC)
Cat. No. 676 61 (12/24 VDC or VAC)
Cat. No. 676 62 (24/48 VDC or VAC)



Connection via 2 automatic terminals without release key (tapping possible)

Opalescent ring (delivered with Cat. Nos 676 61/62/69)



Cat. No. 676 69 (230 VAC)

Put switch on 0.15 mA side
(Cat. Nos: 676 61/62 no switch setting)

Cat. No. 670 34/38

Not possible

Céliane™ 6A push-buttons

Cat No(s): 670 31/34/38

3. PRODUCTS WITH INDICATOR LIGHT (cont.)

3.2 Indicator function (circuit status)

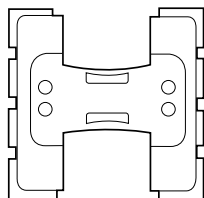
Cat. No. 670 31

• Independent indicator light

Cat. No. 676 69 (230 VAC)

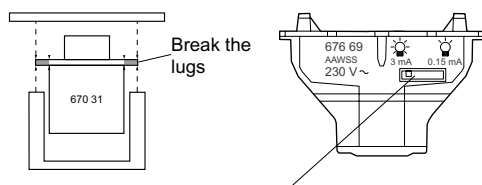
Cat. No. 676 61 (12/24 VAC)

Cat. No. 676 62 (24/48 VDC or VAC)



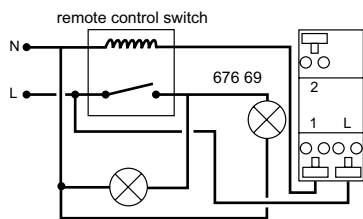
Connection via 2 automatic terminals without release key (tapping possible)

Opalescent ring (delivered with Cat. Nos 676 61/62/69)



Cat. No. 676 69 (230 VAC) Put switch on 0.15 mA side (Cat. Nos: 676 61/62 no switch setting)

Cat. No. 670 31



Not possible to use Cat. No. 676 68 for the indicator function, only use Cat. Nos 676 61/62/69.

Cat. No. 670 34

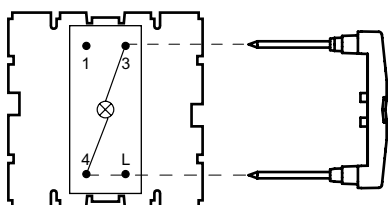
Cat. No. 670 38

Not possible

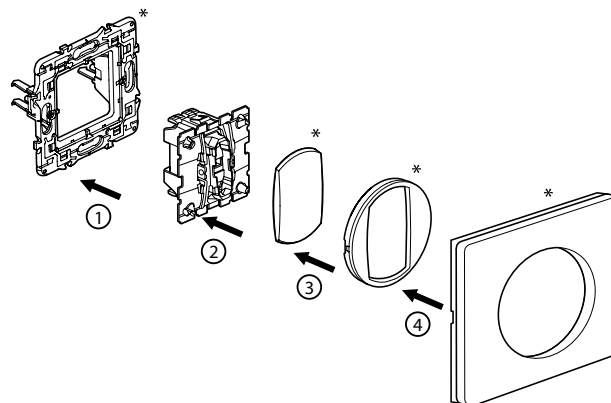
Cat. No. 676 68 (230 VAC)

Use a specific cover plate Cat. No. 680 03 or 683 03

Cat. No. 670 34



4. INSTALLATION



* Not supplied with the mechanism

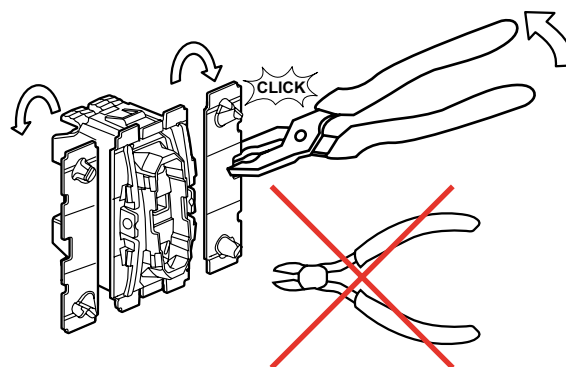
- 1 - Clip the mechanism onto the support frame.
- 2 - Clip the rocker onto the mechanism.
- 3 - Clip the cover plate (supplied with the rocker) to the mechanism/rocker assembly.
- 4 - Clip the plate onto the support frame.

Finishes:

Can be fitted with all Céliane finishes.

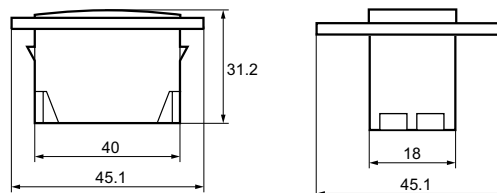
Multi-gang horizontal and vertical mounting.

Possibility of installing a double push-button in 1-gang configuration with Cat. Nos 670 31/34.

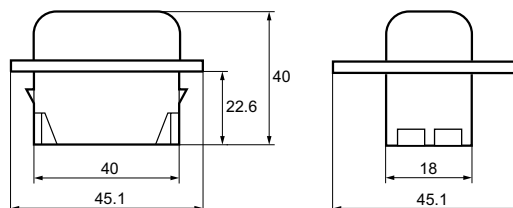


5. OVERALL DIMENSIONS

Cat. Nos 670 31/34



670 38



Cat. No.

Céliane™

6A push-buttons

Cat No(s): 670 31/34/38

6. CONNECTION

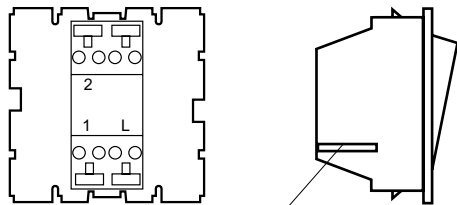
Cat. Nos 670 31/34/38

Automatic terminals

Terminal capacity: 2 x 1.5 mm²

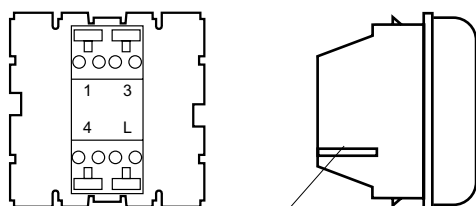
Strip wire to 13 mm (stripping guide on product)

Cat. Nos 670 31/38



Stripping length guide

Cat. No. 670 34



Stripping length guide

7. OPERATION

Cat. Nos 670 31/34

Switching mechanism

Cat. No. 670 38

Pull mechanism

8. GENERAL CHARACTERISTICS

8.1 Mechanical characteristics

IP: 20

IK: 04

8.2 Material characteristics

Mechanism: grey polycarbonate

Self-extinguishing: 850 °C / 30 s

8.3 Electrical characteristics

Voltage: 250 V AC

Current: 6 A

8.4 Climatic characteristics

Storage and operating temperature: - 5 °C to +35 °C

9. CLEANING

No cleaning

10. ACCESSORIES

- Cord for pull cord push-button: Cat. No. 898 05
 - Light with illumination function 230 V: Cat. No. 676 66
 - Light with illumination function 12/24/48 V: Cat. No. 676 67
 - Indicator light 230 V: Cat. No. 676 68
 - Indicator/illumination function light 230 V: Cat. No. 676 69
- 12-24 V Cat. No. 676 61
24-48 V Cat. No. 676 62